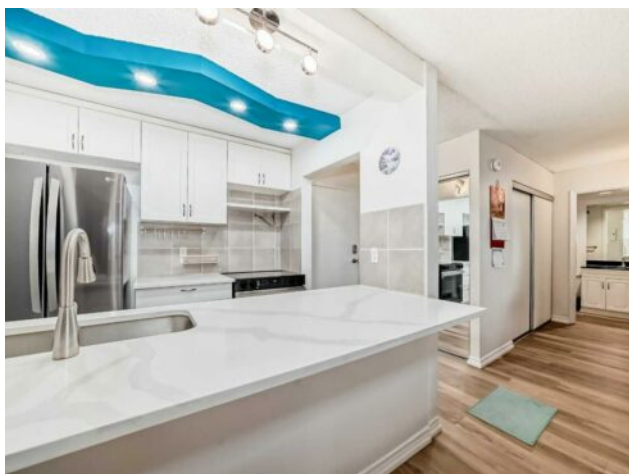


1512, 221 6 Avenue SE  
Calgary, Alberta

MLS # A2206427



# \$224,900

<b>Division:</b>	Downtown Commercial Core		
<b>Type:</b>	Residential/High Rise (5+ stories)		
<b>Style:</b>	Apartment-Single Level Unit		
<b>Size:</b>	706 sq.ft.	<b>Age:</b>	1980 (45 yrs old)
<b>Beds:</b>	1	<b>Baths:</b>	1
<b>Garage:</b>	Assigned, Parkade		
<b>Lot Size:</b>	-		
<b>Lot Feat:</b>	-		

<b>Heating:</b>	Hot Water, Natural Gas	<b>Water:</b>	-
<b>Floors:</b>	Vinyl Plank	<b>Sewer:</b>	-
<b>Roof:</b>	-	<b>Condo Fee:</b>	\$ 579
<b>Basement:</b>	-	<b>LLD:</b>	-
<b>Exterior:</b>	Concrete	<b>Zoning:</b>	CR20-C20
<b>Foundation:</b>	-	<b>Utilities:</b>	-
<b>Features:</b>	See Remarks		

**Inclusions:** TV shelf, sofa, bed

This freshly-updated 1-bedroom, 1-bath condo offers a perfect blend of modern updates, convenience, and downtown living. With 706 sq ft of thoughtfully designed space, this home features an open and airy layout, freshly updated with neutral paint throughout. The newly renovated kitchen boasts sleek, modern cabinets and high-quality appliances, creating a fresh and inviting atmosphere. Included with the condo are the bed, sofa, and TV stand. The luxury vinyl plank flooring throughout adds an elegant touch that is both durable and easy to maintain. Step outside onto the oversized balcony to enjoy breathtaking downtown views, offering the perfect setting to relax or entertain. The building itself offers fantastic amenities to enhance your lifestyle, including a gym with a sauna, a racquetball court, and a rooftop terrace where you can take in the stunning city skyline. For your convenience, there is an on-site building caretaker, laundry facilities, and easy access to the Plus15 for seamless commuting. Additionally, the condo comes with 1 underground assigned parking stall, ensuring you have a secure place for your vehicle. This condo is located in a well-maintained building that provides a blend of comfort and convenience, making it an ideal choice for anyone looking to live in the heart of downtown.