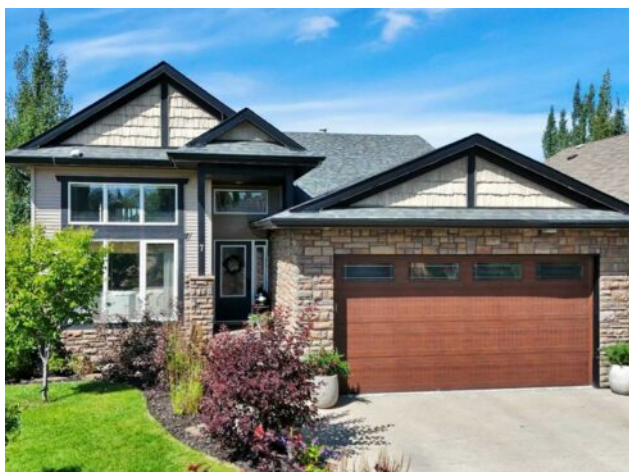


7 Woodrow Close  
Red Deer, Alberta

MLS # A2244940



# \$629,000

Division:	Westlake		
Type:	Residential/House		
Style:	Bi-Level		
Size:	1,307 sq.ft.	Age:	2005 (20 yrs old)
Beds:	5	Baths:	3
Garage:	Concrete Driveway, Double Garage Attached, Garage Door Opener, Garage		
Lot Size:	0.14 Acre		
Lot Feat:	Back Lane, Cul-De-Sac, Landscaped, Underground Sprinklers		

**Heating:** In Floor, Fireplace(s), Forced Air, Natural Gas

**Floors:** Carpet, Hardwood, Tile

**Roof:** Shingle

**Basement:** Finished, Full

**Exterior:** Concrete, Stone, Vinyl Siding, Wood Frame

**Foundation:** Poured Concrete

**Features:** Breakfast Bar, Built-in Features, Ceiling Fan(s), Central Vacuum, Double Vanity, French Door, Kitchen Island, Quartz Counters, Recessed Lighting, Vaulted Ceiling(s), Vinyl Windows, Walk-In Closet(s)

**Inclusions:** U.G. sprinkler system and hardware

**Water:** -

**Sewer:** -

**Condo Fee:** -

**LLD:** -

**Zoning:** R-L

**Utilities:** -

~Beautifully upgraded and decorated Bi-Level in WESTLAKE!! Woodrow close is a tucked away gem, quiet, and nicely connected to the walking trails, it's an easy walk to Heritage Range and the Red Deer river and a short drive to downtown and the Red Deer hospital! ~5 Beds, 3 Baths, located on a family friendly CLOSE, steps away from WALKING TRAILS! This fully finished home features Quartz counter tops, upgraded light fixtures, newer cabinet hardware, tile flooring plus updated carpet & blinds. The main and en-suite bath have been recently updated with subway tile, quartz counter tops with under mount sinks and tiled flooring plus a TOTO Neorest smart toilet in the ensuite! Walk into the main floor living room with Acacia hardwood, large and bright front window, and impressive feature gas fireplace. A few steps to the upper level is home to a large and bright kitchen with ample counter and cabinet space, tiled flooring. and center island with breakfast bar. The spacious dining area will accommodate the entire extended family. There are 3 beds and 2 baths on the upper level, including the spacious rear master with a lovely 4pc en-suite and walk-in closet. The basement is fully finished with in-floor heat, 2 large bedrooms (one is huge and could also make a great media/exercise room) and a large family room. The windows are large and bright, allowing loads of natural light, and this fine home also features new roof shingles with metal valleys, central A/C, reverse osmosis and water softener a lovely covered rear deck, and a large yard with UNDER GROUND SPRINKLER SYSTEM, plus a new Classic Barns Shed, all enclosed with vinyl fencing. This fine home is made complete with a heated attached double garage with EPOXY flooring, space to park your RV and fabulous neighbours!