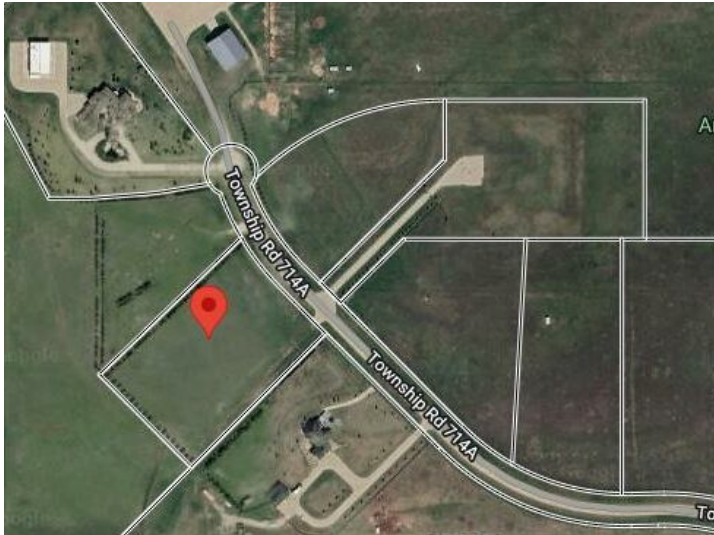


**6, 714040 71 Range Road**  
**Rural Grande Prairie No. 1, County of, Alberta**

**MLS # A2218276**



**\$289,000**

**Division:** NONE

**Lot Size:** 5.28 Acres

**Lot Feat:** -

**By Town:** Grande Prairie

**LLD:** 26-71-7-W6

**Zoning:** CR 5

**Water:** Cistern

**Sewer:** -

**Utilities:** -

**VACANT LOT AND IMMEDIATE POSSESSION!!!** This 5.28 acre lot is ready to build on and zoned CR 5 country residential. Enjoy the convenience of being just minutes from Grande Prairie, where you'll find a variety of amenities to suit your lifestyle. With flexible options for build-to-suit and carrying options available, your vision can become a reality. Don't miss out on this incredible opportunity to invest in a community.