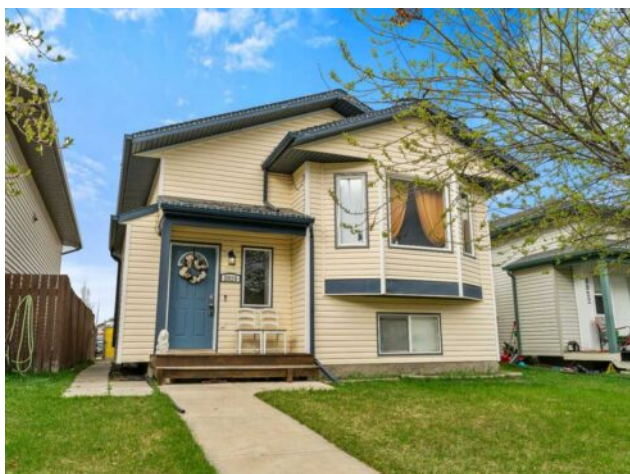


8826 66 Avenue  
Grande Prairie, Alberta

MLS # A2215853



# \$344,900

**Division:** Countryside South

**Type:** Residential/House

**Style:** Bi-Level

**Size:** 1,028 sq.ft. **Age:** 2004 (21 yrs old)

**Beds:** 5 **Baths:** 2

**Garage:** Parking Pad

**Lot Size:** 0.10 Acre

**Lot Feat:** See Remarks

**Heating:** Forced Air

**Floors:** Carpet, Vinyl Plank

**Roof:** Asphalt Shingle

**Basement:** Finished, Full

**Exterior:** Mixed

**Foundation:** Poured Concrete

**Features:** See Remarks

**Water:** -

**Sewer:** -

**Condo Fee:** -

**LLD:** -

**Zoning:** RS

**Utilities:** -

**Inclusions:** Shed

Beautifully Maintained Bi-Level in Coveted Countryside South &ndash; 5 Bed, 2 Bath, 1028 Sq Ft. Pride of ownership shines throughout this stunning 2004 detached bi-level, nestled in the desirable Countryside South neighborhood. With 5 spacious bedrooms and 2 full bathrooms, this fully developed home offers both style and functionality for growing families or those seeking extra space. Step inside to discover a sunny, south-facing living room that fills with natural light and flows seamlessly into the spacious dining area and L-shaped kitchen. The kitchen boasts a convenient pantry, updated vinyl plank flooring, and modern finishes perfect for everyday living and entertaining. The upper level features three generously sized bedrooms, including a master suite with double closets and a walk-through bathroom&mdash;comfortably fitting a king-sized bed. Downstairs, enjoy 9&rsquo; ceilings in the fully finished basement, which includes a large family room, two additional bedrooms, a full bath, and a utility room with lots of storage and thoughtfully added shelving. Outside, the home continues to impress. A fully fenced backyard provides privacy and space, while a large rear parking area with back lane access offers the potential for a future detached garage. A matching shed adds extra storage convenience. Recent Updates Include: New back Fence (2022), New Hot Water Tank (2022), New Dishwasher (2021), Washer & Dryer (2021), Utility Room Shelving, Pre-piped Spare Sump Pump ready for Installation. With modern paint colors, spacious bedrooms, and a layout that checks all the boxes, this home is truly move-in ready. Whether you&rsquo;re starting out, upgrading, or investing, this gem won&rsquo;t last long! Don&rsquo;t miss your chance to own this exceptional home in one of the city&rsquo;s most sought-after neighborhoods. Book your showing today!