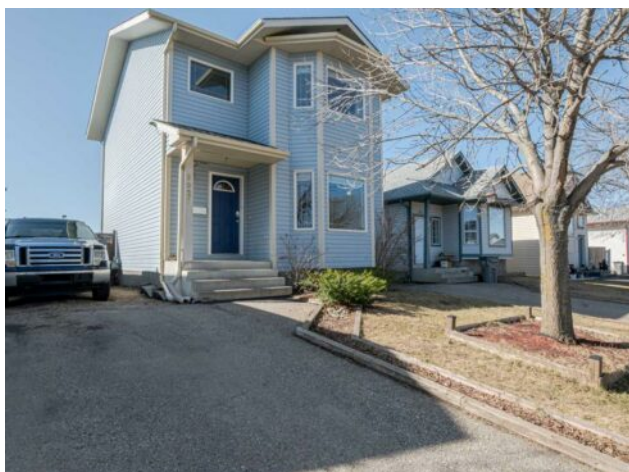


9027 62 Avenue
Grande Prairie, Alberta

MLS # A2214300



\$330,000

Division: Countryside South

Type: Residential/House

Style: 2 Storey

Size: 1,280 sq.ft. **Age:** 1998 (27 yrs old)

Beds: 3 **Baths:** 2 full / 1 half

Garage: Parking Pad

Lot Size: 0.09 Acre

Lot Feat: Landscaped

Heating: Forced Air

Floors: Laminate, Linoleum

Roof: Asphalt

Basement: Finished, Full

Exterior: Vinyl Siding

Foundation: Poured Concrete

Features: See Remarks

Water: -

Sewer: -

Condo Fee: -

LLD: -

Zoning: RS

Utilities: -

Inclusions: NA

Welcome to this warm and inviting 2-storey home tucked away in the mature and family-friendly neighborhood of Countryside South. Thoughtfully developed from top to bottom, this home offers 3 bedrooms and 2.5 bathrooms—perfect for a growing family or first-time buyers. The main floor features a bright and welcoming living room, thanks to a large front window that brings in tons of natural light. The kitchen is spacious and functional, complete with a pantry and ample cabinetry. Just off the dining area, step out to the sunny south-facing backyard—ideal for summer BBQs or a morning coffee. A convenient half bath rounds out the main level. Upstairs, you’ll find three generously sized bedrooms and a full 4-piece bathroom, perfect for keeping the family close yet comfortable. The fully finished basement adds even more space with a cozy rec room or family hangout area, a 3-piece bathroom, laundry, and plenty of storage. New shingles—giving you peace of mind for years to come. The fully fenced and landscaped backyard backs onto an easement, providing extra privacy from neighbors. Plus, you’re just minutes from walking trails, parks, and schools—everything you need is close by. Countryside South is a fantastic community to call home. Whether you’re just starting out or looking to settle into a family-friendly neighborhood, this home checks all the boxes. Don’t miss your chance to see it—schedule your showing today!